

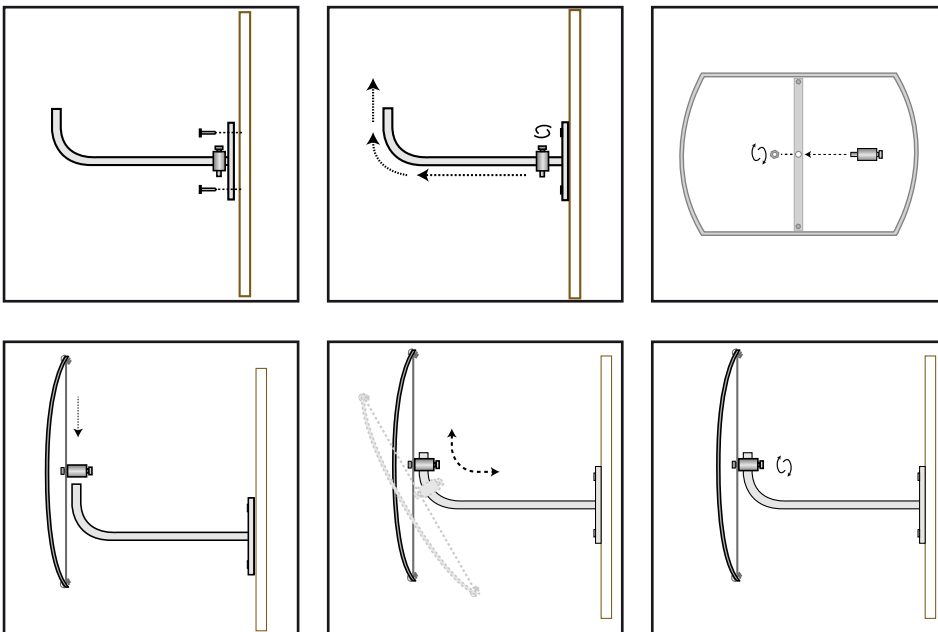


DuraVision™ Convex Mirror Installation Guide:



Indoor Space Saver

1. Decide the appropriate place to site the mirror to give maximum vision.
2. Fix J-Bracket to wall or ceiling using suitable fixing hardware (ie: screws, bolts). Allowing enough room to get the mirror on to the J-Bracket.
3. Thread the adaptor through the Aluminium Bar into the Hex Nut and tighten.
4. Peel protective film off around the immediate edge of the mirror.
5. Slide the adaptor and mirror over the J-Bracket and adjust mirror to the desired position.
6. Tighten the locking bolt on the adaptor securely.



Installation Guides:

- ▶ Indoor Standard Convex Mirror
- ▶ [Indoor Space Saver Convex Mirror](#)
- ▶ Indoor Ceiling Dome Convex Mirror
- ▶ Indoor Half Dome Convex Mirror
- ▶ Indoor Quarter Dome Convex Mirror
- ▶ Outdoor Heavy Duty Convex Mirror
- ▶ Outdoor De Luxe Convex Mirror
- ▶ Outdoor Pro Series Convex Mirror
- ▶ Inspection Convex Mirrors
- ▶ Food Processing Convex Mirrors
- ▶ School Mirror Set
- ▶ Corrections Dome With Frame
- ▶ Corrections Half Dome With Frame
- ▶ Corrections Quarter Dome With Frame

Cleaning Guides:

- ▶ Acrylic Mirror
- ▶ Stainless Steel Mirror
- ▶ Polycarbonate Mirror

DuraVision™ Mirror Systems

Find our more about the great range of DuraVision Mirror Systems at our website...



www.duravision.net